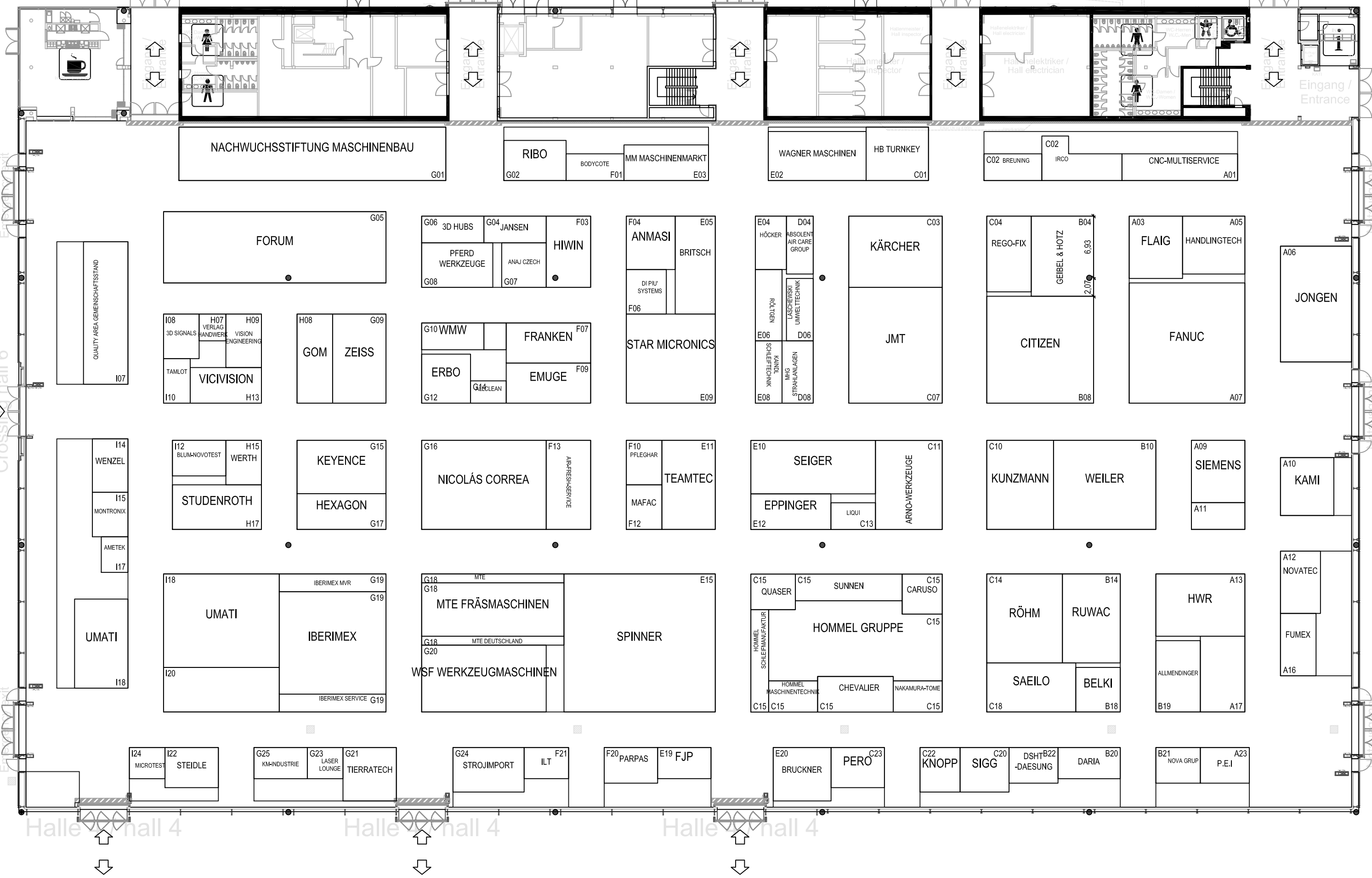


Übergang Halle 7a /
Crossing hall 7a

Übergang Halle 7.0 /
Crossing hall 7.0

Notausgang /
Emergency exit
Übergang Halle 6 /
Crossing hall 6

Emergency exit
Emergency exit
Emergency exit



Aussteller	Halle	Stand-Nr.	Aussteller	Halle	Stand-Nr.	Aussteller	Halle	Stand-Nr.
3D HUBS	H05	G06	IBERIMEX	H05	G19	RÖLTGEN	H05	E06
3D SIGNALS	H05	I08	IBERIMEX MVR	H05	G19	RUWAC	H05	B14
ABSOLENT	H05	D04	IBERIMEX SERVICE	H05	G19	SAEILO	H05	C18
ABSOLENT AIR CARE GROUP	H05	D04	ILT	H05	F21	SAP	H05	I18
AIR-FRESH-SERVICE	H05	F13	IRCO	H05	C02	SEIGER	H05	E10
ALLCLEAN	H05	G14	JANSEN	H05	G04	SIEMENS	H05	A09
ALLMENDINGER	H05	B19	JMT	H05	C07	SIGG	H05	C20
AMETEK	H05	I17	JONGEN	H05	A06	SMW-AUTOBLOK	H05	G20
ANAJ CZECH	H05	G07	KAINDL SCHLEIFTECHNIK	H05	E08	SPINNER	H05	E15
ANMASI	H05	F04	KAMI	H05	A10	STAR MICRONICS	H05	E09
ARNO-WERKZEUGE	H05	C11	KÄRCHER	H05	C03	STEIDLE	H05	I22
BELKI	H05	B18	KEYENCE	H05	G15	STROJIMPORT	H05	G24
BIGLIA	H05	E11	KM-INDUSTRIE	H05	G25	STUDENROTH	H05	H17
BLUM-NOVOTEST	H05	I12	KNOPP	H05	C22	SUNNEN	H05	C15
BODYCOTE	H05	F01	KUNZMANN	H05	C10	TAMLOT	H05	I10
BREUNING	H05	C02	LAGUN	H05	C07	TEAMTEC	H05	E11
BRITSCH	H05	E05	LASCHEWSKI UMWELTECHNIK	H05	D06	TEKNOX	H05	G25
BRUCKNER	H05	E20	LASER LOUNGE	H05	G23	TIERRATECH	H05	G21
CARUSO	H05	C15	LIQUI	H05	C13	UMATI	H05	I18
CHEVALIER	H05	C15	M&H	H05	G17	VERLAG HANDWERK UND TECHNIK	H05	H07
CITIZEN	H05	B08	MAFAC	H05	F12	VICIVISION	H05	H13
CNC-MULTISERVICE	H05	A01	MHG STRAHLANLAGEN	H05	D08	VISION ENGINEERING	H05	H09
DARIA	H05	B20	MICROTEST	H05	I24	WAGNER MASCHINEN	H05	E02
DI PIU' SYSTEMS	H05	F06	MM MASCHINENMARKT	H05	E03	WEILER	H05	B10
DSHT-DAESUNG	H05	B22	MONTRONIX	H05	I15	WENZEL	H05	I14
EMCO	H05	I18	MTE DEUTSCHLAND	H05	G18	WERTH	H05	H15
EMUGE	H05	F09	MTE ENGINEERING	H05	G18	WMW	H05	G10
EPPINGER	H05	E12	MTE FRÄSMASCHINEN	H05	G18	WSF WERKZEUGMASCHINEN	H05	G20
ERBO	H05	G12	NACHWUCHSSTIFTUNG MASCHINENBAU	H05	G01	ZEISS	H05	G09
FANUC	H05	A07	NAKAMURA-TOME	H05	C15			
FJP	H05	A01	NICOLÁS CORREA	H05	G16			
FLAIG	H05	A03	NOVA GRUP	H05	B21			
FRANKEN	H05	F07	NOVATEC	H05	A12			
FUMEX	H05	A16	OPTRIS	H05	I07			
GEIBEL & HOTZ	H05	B04	P.E.I	H05	A23			
GOM	H05	H08	PARPAS	H05	F20			
HANDLINGTECH	H05	A05	PERO	H05	C23			
HB TURNKEY	H05	C01	PFERD-WERKZEUGE	H05	G08			
HEIMATEC	H05	C15	PFLEGHAR	H05	F10			
HEXAGON	H05	G17	QUALITY AREA GEMEINSCHAFTSSTAND	H05	I07			
HIWIN	H05	F03	QUASER	H05	C15			
HÖCKER	H05	E04	REGO-FIX	H05	C04			
HOMMEL GRUPPE	H05	C15	REMA CONTROL	H05	E11			
HOMMEL MASCHINENTECHNIK	H05	C15	RENDER	H05	G25			
HOMMEL SCHLEIFMANUFAKTUR	H05	C15	RIBO	H05	G02			
HWR	H05	A13	RÖHM	H05	C14			